

THE PATTON

One & A Half Story Home – 2,508 Finished Sq. Ft.
2 Bed, 3 Bath, 2 Car Garage, Slab on Grade



Main Level Features Include:

- 9' ceilings throughout main level
- Master suite
- Open concept floor plan
- Open kitchen with walk-in pantry
- Custom cabinets
- Millwork finished onsite
- Luxury vinyl plank flooring

Upper Level Features Include:

- 8' ceilings throughout upper level
- Loft space
- Bedroom + Office
- Large bathroom

Exterior/Additional Features Include:

- Covered maintenance free porch
- Garage sheetrock
- Spacious 2-car garage
- Gutters
- Insulated garage doors & walls
- Vinyl board & batten or vinyl shakes
- Maintenance free vinyl windows
- 30-year architectural shingles
- Concrete sidewalk to front entry
- Exterior stone

*PRICES AND SELECTIONS ARE SUBJECT TO CHANGE

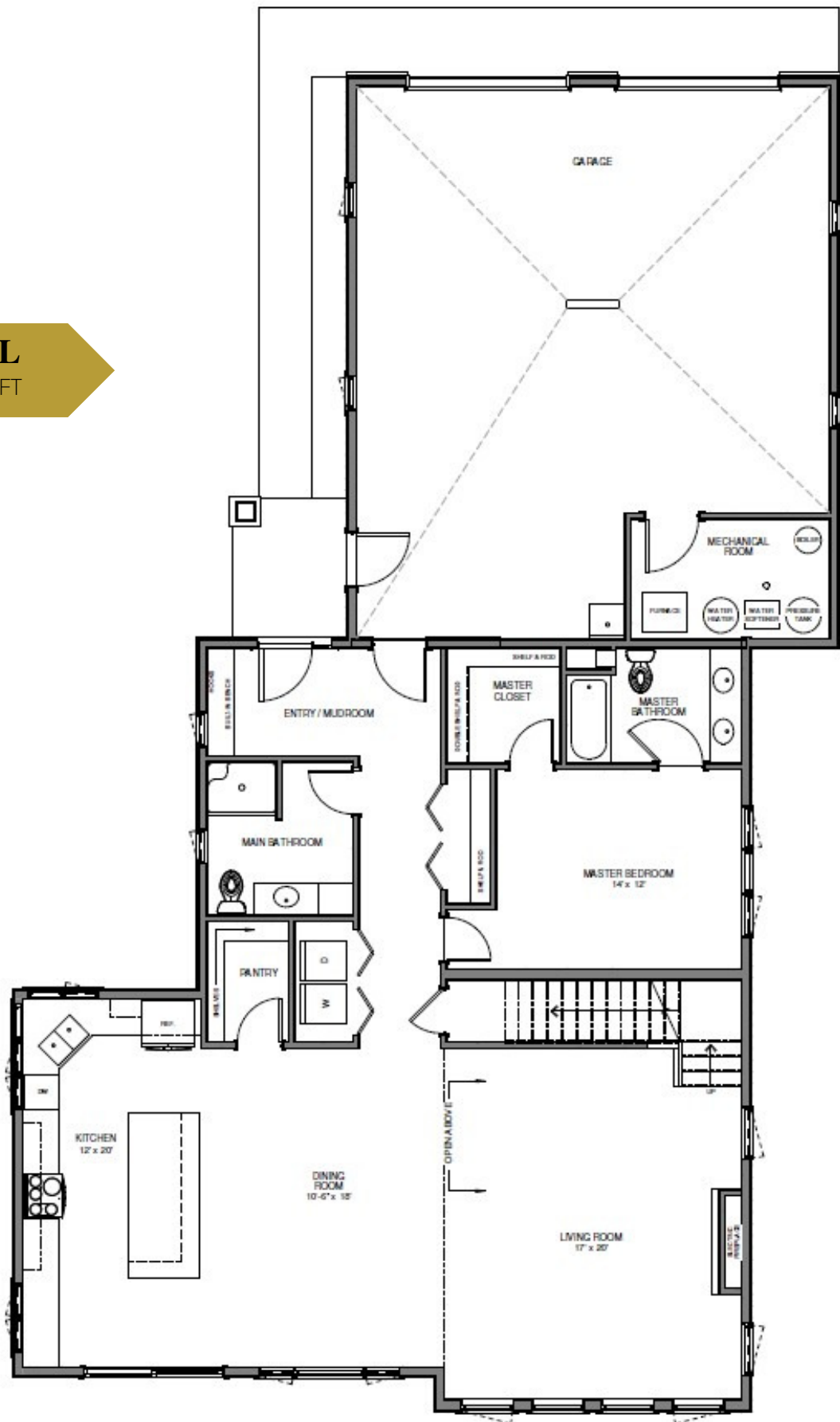


P.O. Box 626
Alexandria, MN 55330

www.jorgenson-homes.com
(763) 856-0348

MAIN LEVEL

1,590 FINISHED SQ. FT.



P.O. Box 626
Alexandria, MN 55330

www.jorgenson-homes.com
(763) 856-0348

UPPER LEVEL

918 FINISHED SQ FT

