

# THE MERIDA II

Split Level Home – 1,310 Finished Sq. Ft.  
3 Bed, 2 Bath, 4 Car Garage, Look-Out



## Main Level Features Include:

- 8' ceilings throughout main level
- Vaulted ceiling over living areas
- Custom cabinets
- Open kitchen with pantry cabinet
- Large kitchen island
- Open concept floor plan
- Millwork finished onsite
- Spacious entry with closet
- Luxury vinyl plank flooring

## Lower Level Features Include:

- 8' ceilings throughout lower level
- Full look-out windows
- Rough-in plumbing for 3<sup>rd</sup> bathroom
- Large unfinished living room space
- Laundry area
- Space for two additional bedrooms

## Exterior/Additional Features Include:

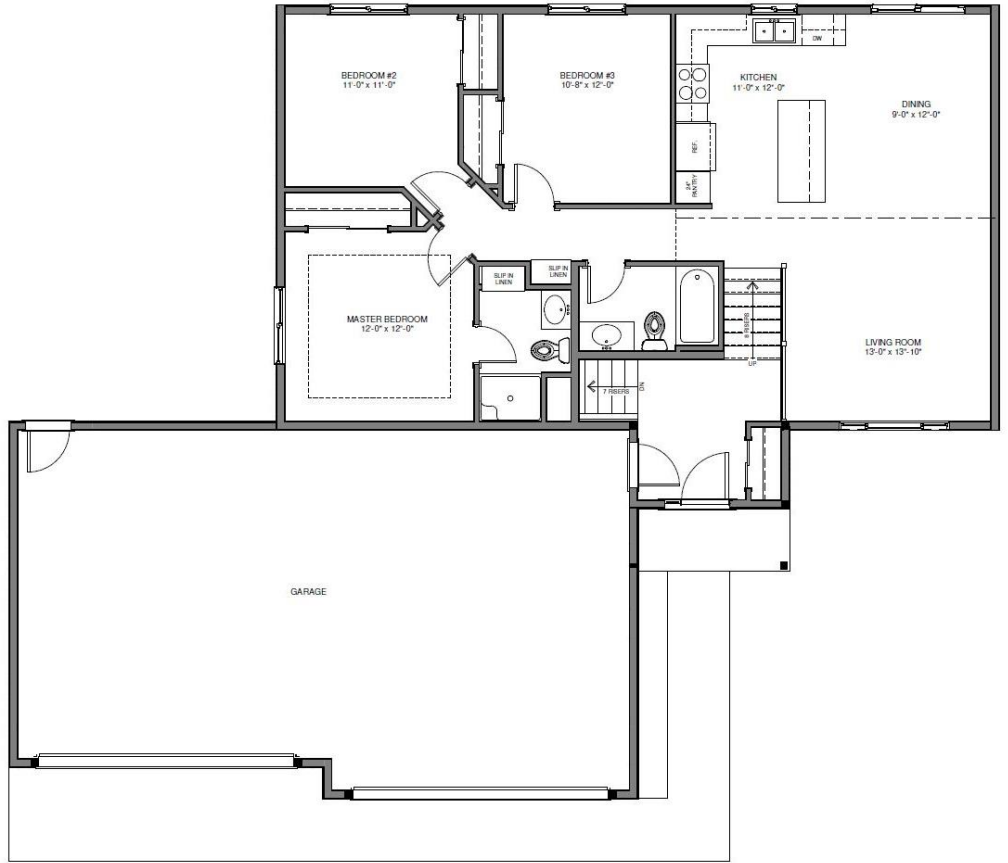
- Covered maintenance free porch
- Maintenance free column
- Spacious 4-car garage
- Gutters
- Insulated garage doors & walls
- Garage sheetrock
- Maintenance free vinyl windows
- 30-year architectural shingles
- Concrete sidewalk to front entry
- Vinyl board & batten or vinyl shakes
- Exterior stone

\*PRICES AND SELECTIONS ARE SUBJECT TO CHANGE

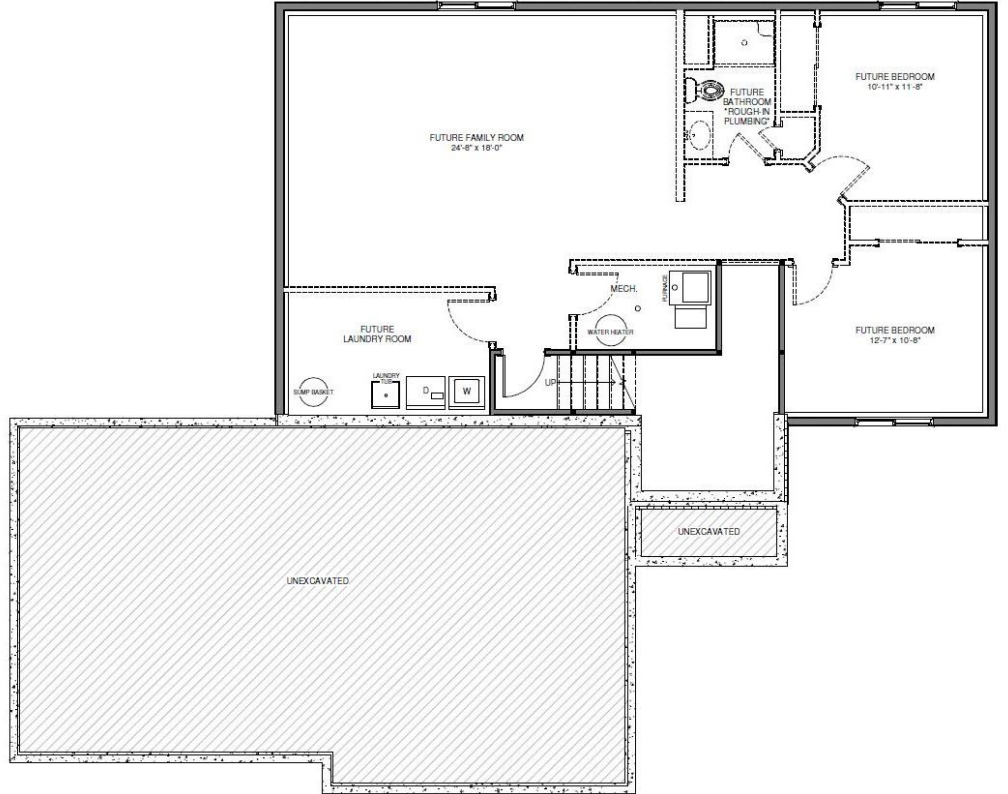


19449 Evans Street NW Suite C  
Elk River, MN 55330

www.jorgenson-homes.com  
(763) 856-0348



**MAIN LEVEL**  
1,310 FINISHED SQ FT



**LOWER LEVEL**  
1,250 UNFINISHED SQ FT



19449 Evans Street NW Suite C  
Elk River, MN 55330

www.jorgenson-homes.com  
(763) 856-0348