

# THE CONCORD II

One & A Half Story Home – 2,625 Finished Sq. Ft.  
3 Bed, 2.5 Bath, 4 Car Garage, Walk-Out



## Main Level Features Include:

- 9' ceilings throughout main level
- Laundry room
- Custom cabinets
- Open kitchen with walk-in pantry
- Master suite
- Open concept floor plan
- Millwork finished onsite
- Spacious entry with built-ins
- Luxury vinyl plank flooring

## Upper Level Features Include:

- 8' ceilings throughout upper level
- Loft space
- Large bathroom
- Two bedrooms
- Walk-in storage closet

## Exterior/Additional Features Include:

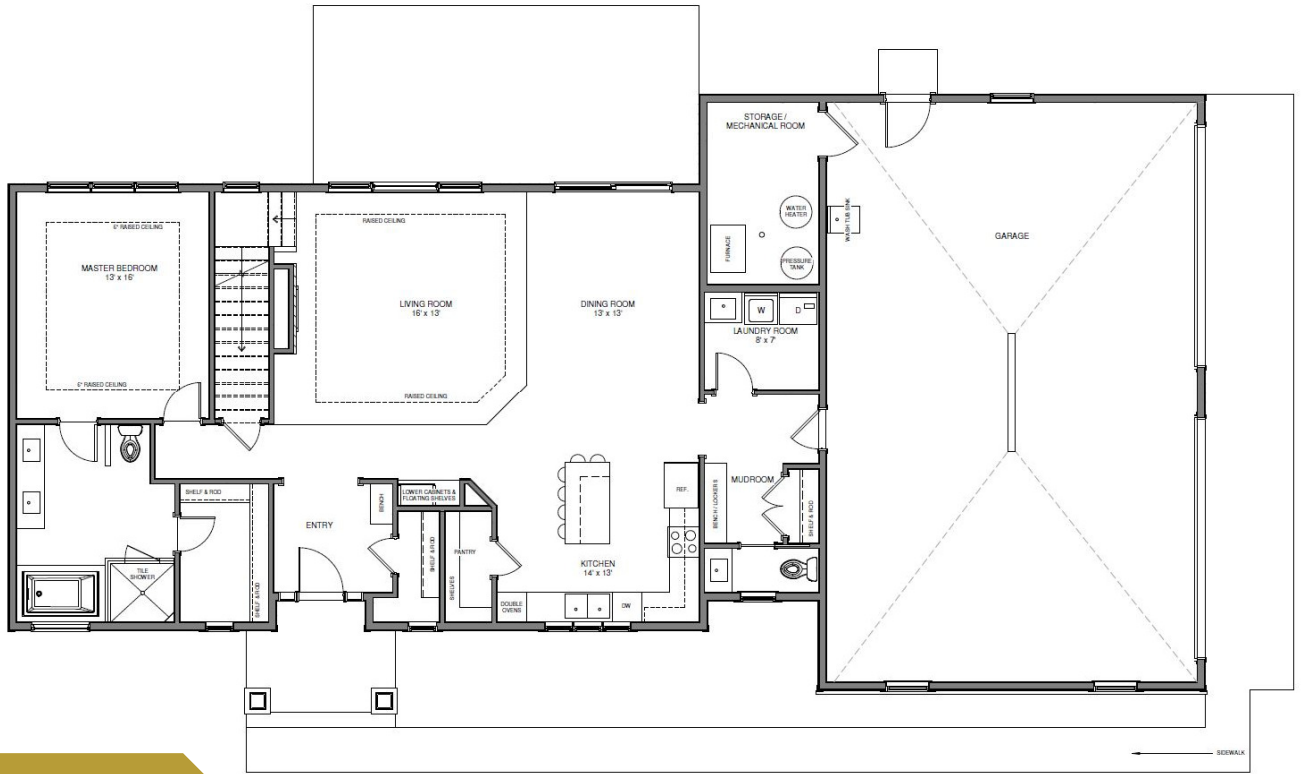
- Covered maintenance free porch
- Maintenance free columns
- Spacious 4-car garage
- Gutters
- Insulated garage doors & walls
- Garage sheetrock
- Maintenance free vinyl windows
- 30-year architectural shingles
- Concrete sidewalk to front entry
- Vinyl board & batten or vinyl shakes
- Exterior stone

\*PRICES AND SELECTIONS ARE SUBJECT TO CHANGE

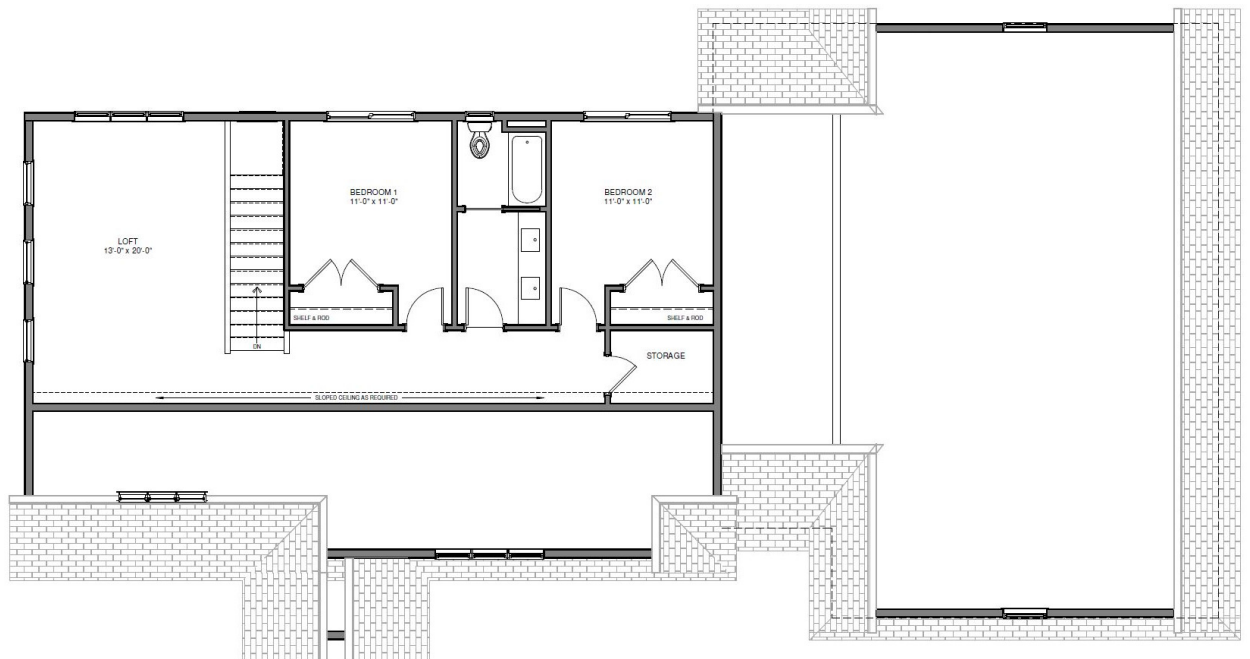


19449 Evans Street NW Suite C  
Elk River, MN 55330

www.jorgenson-homes.com  
(763) 856-0348



**MAIN LEVEL**  
1,675 FINISHED SQ FT



**UPPER LEVEL**  
950 FINISHED SQ FT



19449 Evans Street NW Suite C  
Elk River, MN 55330

www.jorgenson-homes.com  
(763) 856-0348